



University of the Philippines

Shaping minds that shape the nation

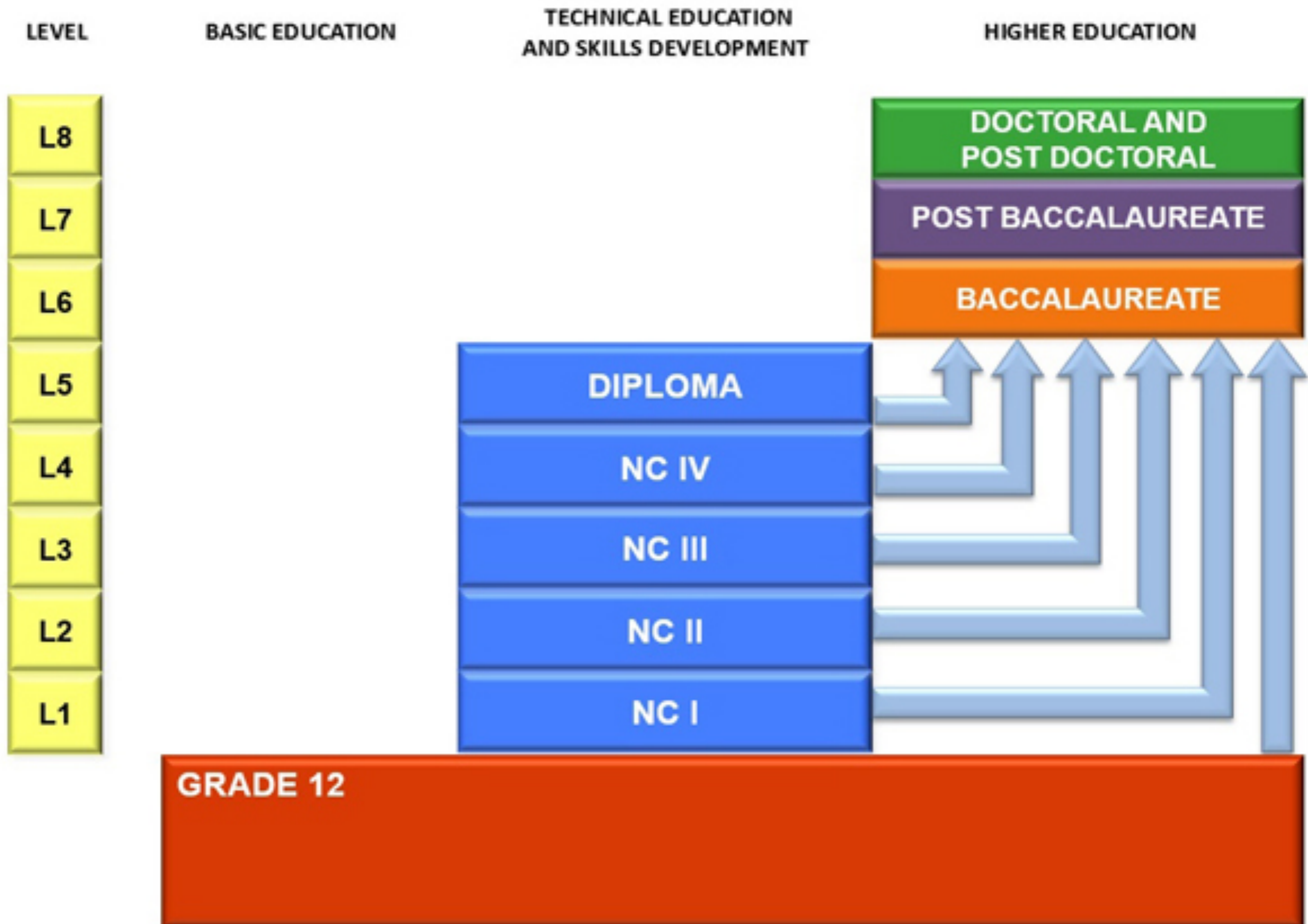
# Weaving Experiences of Philippine Higher Education Institutions in Designing Microcredentials

**Greg Tabios Pawilen**

University of the Philippines Los Banos

- As of 2020, the Philippines has 1,975 HEIs (excluding satellite campuses of state universities and colleges).
  - 246 are public HEIs
  - 729 are private institutions. at least two graduate-level courses leading to doctoral degrees

# The PHL Qualifications Framework



# The Life We Want

**AMBISYON** NATIN 2040



## Matatag

STRONGLY ROOTED

*It is a high-trust society with a strong sense of community.*



## Maginhawa

COMFORTABLE

*No one is poor, no one is ever hungry.*



## Panatag

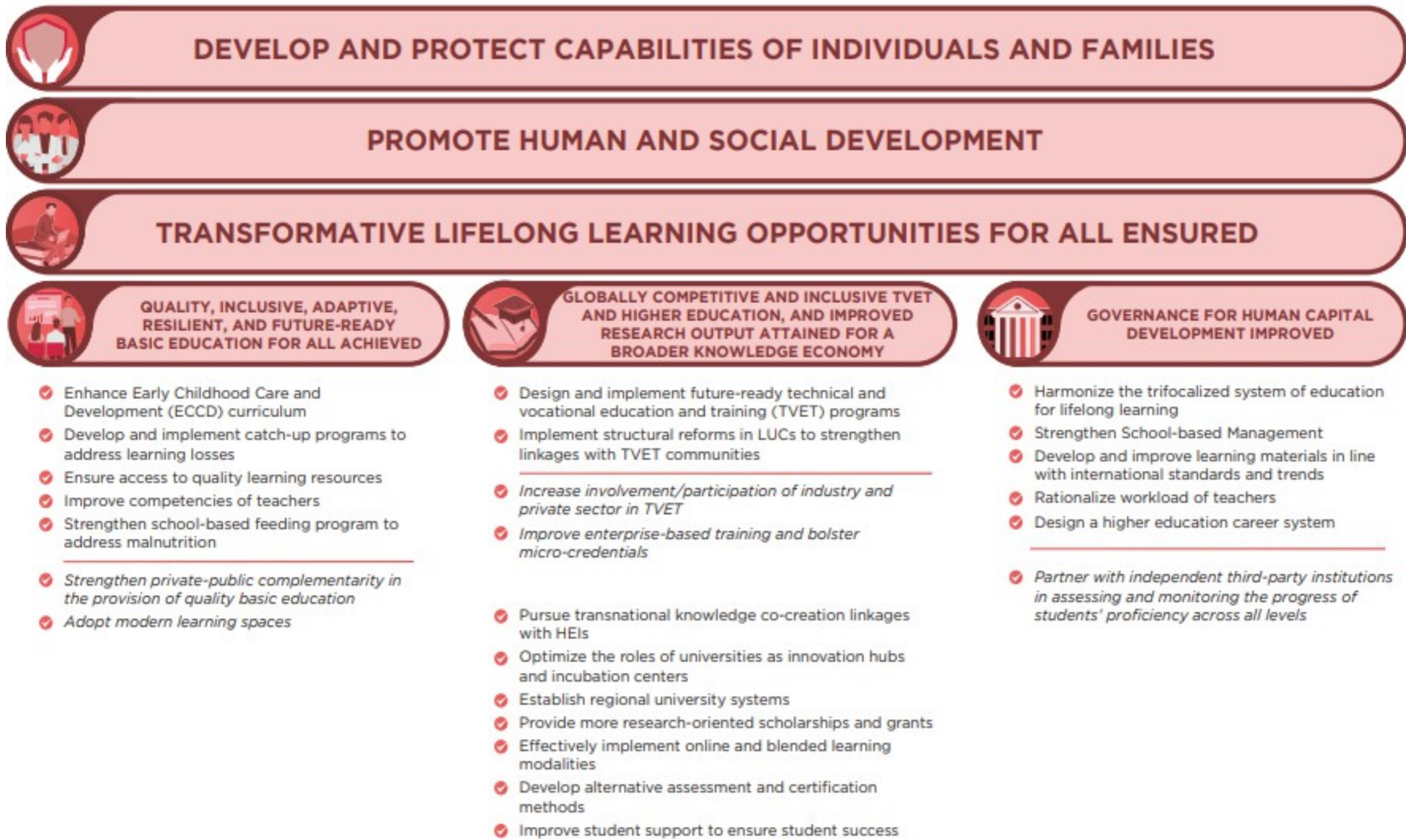
SECURE

*Filipinos live in peace and security with enough resources not only for day-to-day needs but also to secure the future.*

**Figure 1.1 Strategy Framework of Philippine Development Plan 2023–2028**



**Figure 2.2 Strategy Framework to Improve Education and Lifelong Learning**



## **VISION**

Philippine higher education system that is accessible, equitable, and produces **locally responsive, innovative, and globally competitive graduates, and lifelong learners**

## **MISSION**

Promote equitable access to higher education, ensure quality programs, and assert the relevance of higher education institutions



**AMBISYON Natin 2040**  
*Matatag, Maginhawa at Panatag na Buhay*

**PDP 2023-2028**  
Economic and Social Transformation for a Prosperous, Inclusive and Resilient Society



**CHED Vision**

Philippine higher education system that is accessible, equitable, and produces locally responsive, innovative and globally competitive graduates and lifelong learners

**CHED Mission**

Promote equitable access to higher education, ensure quality programs, and assert the relevance of higher education institutions

**KRA 1: Access and Success**  
Ensure equitable and inclusive access to and success in higher education

1. Student profiling
2. Student financial assistance
3. Multiple entry/exit pathways to higher education
4. Student support
5. Learning environment
6. Rural higher education
7. Admission policies
8. Student profiling

**KRA 2: Quality and Excellence**  
Attain and sustain quality and excellence in higher education institutions

- |                                       |  |
|---------------------------------------|--|
| 1. Quality assurance systems          | 7. Student internship program          |
| 2. Program offerings                  | 8. Lifelong learning education         |
| 3. Graduate education program         | 9. Instructional / learning facilities |
| 4. Teacher education program          | 10. Career guidance                    |
| 5. Research program                   | 11. Skills gap                         |
| 6. Professional development (faculty) | 12. Alumni support                     |

**KRA 3: Internationalization**  
Intensify internationalization of Philippine higher education

1. Internationalization strategies
2. Integration of global dimensions into HEI vision, mission, goals and functions
3. Adaption of international metrics into HEIs
4. International partnerships/collaboration

**KRA 4: Social Responsibility**  
Reinforce social responsibility of higher education institutions

1. Comprehensive extension programs
2. National Service Training Programs
3. Civic Welfare Training Service (CWTS)
4. Literacy Training Service (LTS)
5. Programs that contribute to Sustainable Development Goals (SDGs)

**KRA 5: Good Governance and Bureaucratic Efficiency**

Practice good governance and improve bureaucratic efficiency at CHED

1. Scholarship programs
2. National policies (ARTA, Data Privacy Act, Procurement Act, FOI, etc.)

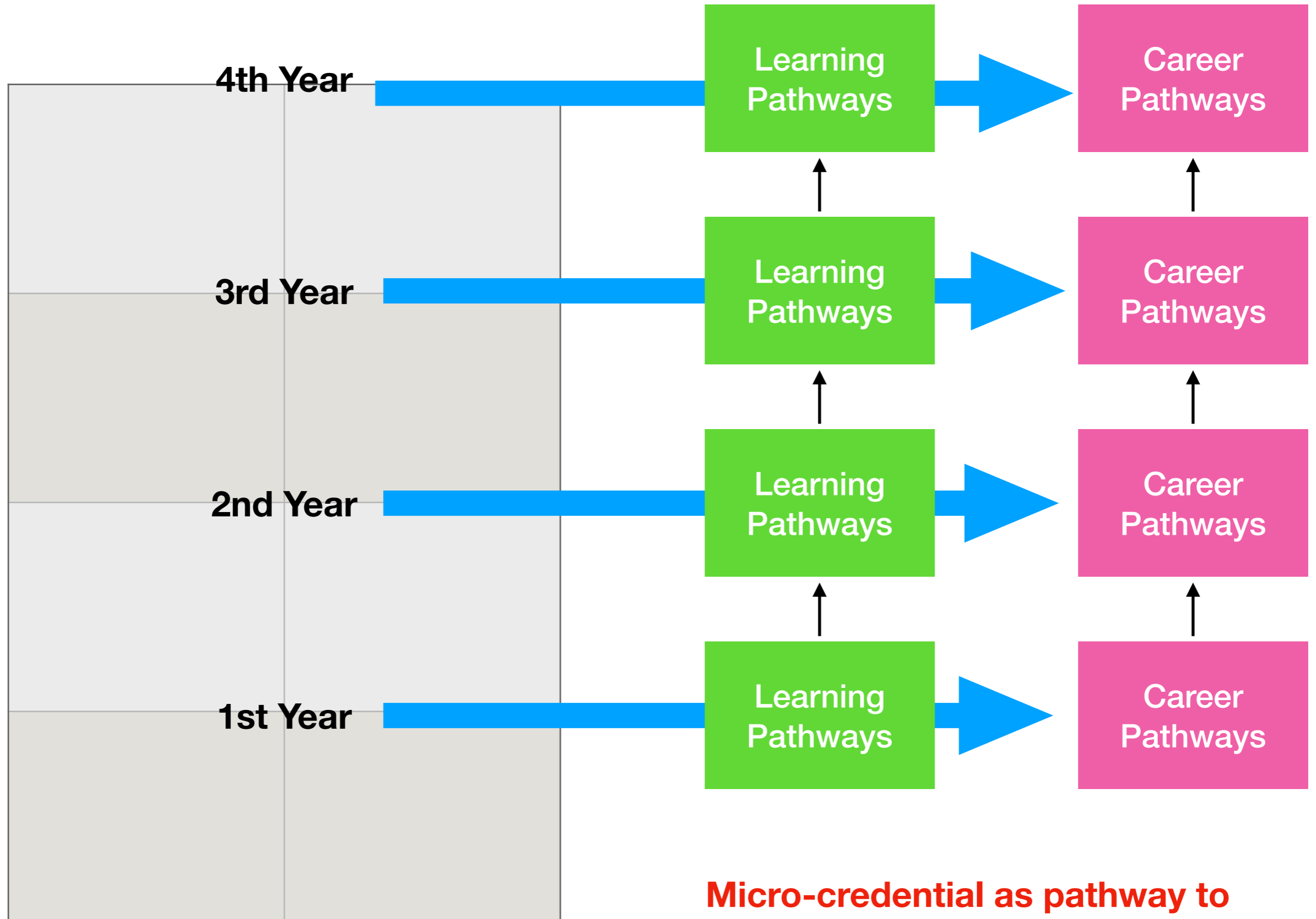


# **Lifelong Learning Micro-credential**

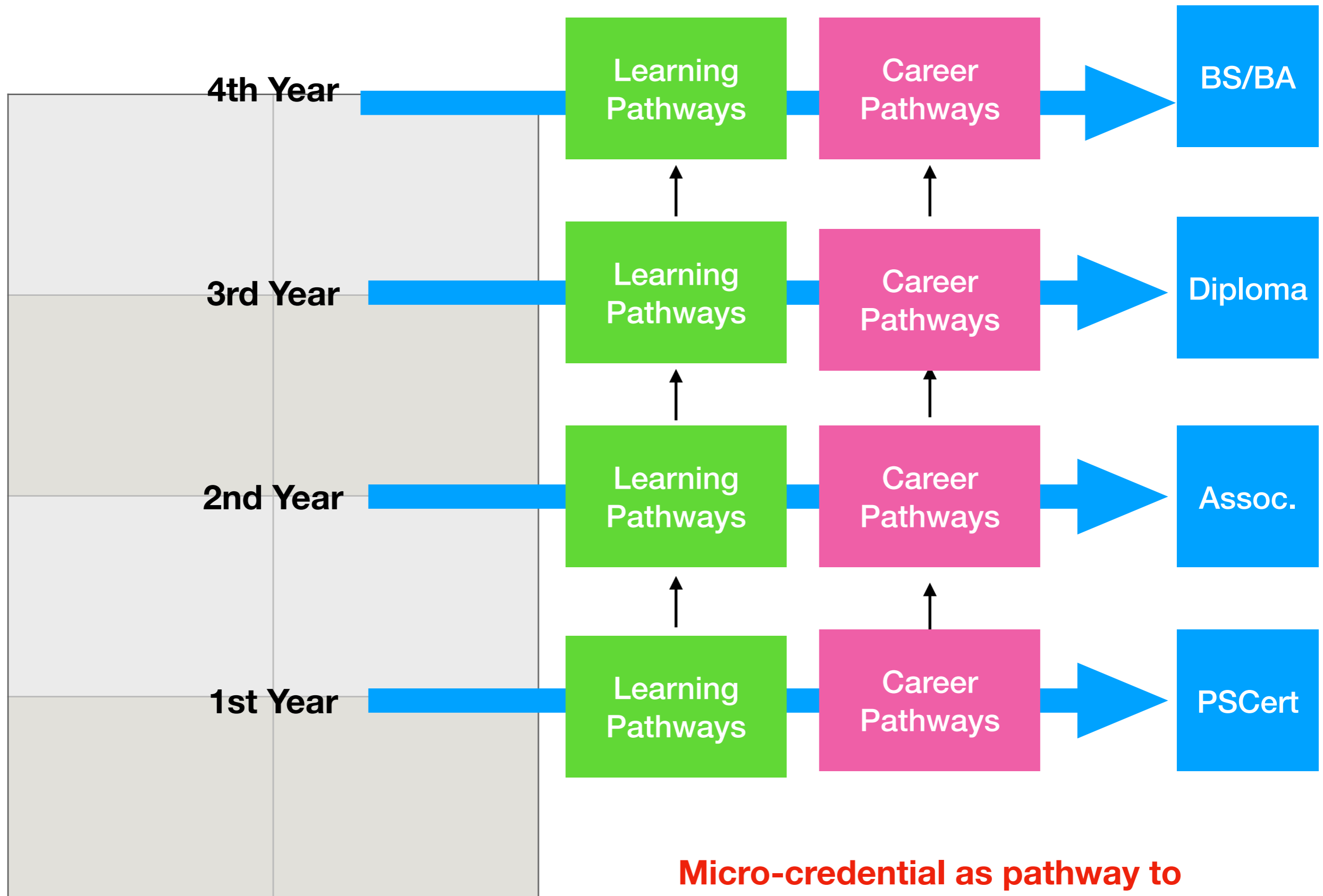


# Emerging Typology of Microcredentials in the Philippines

- Continuing Education
- Upskilling
- Needs-based and Interests-based
- Industry-based



**Micro-credential as pathway to match job requirements**



**Micro-credential as pathway to a Ladderized Curriculum**

# Current Initiatives

- UPLB is providing the training for designing microcredentials among Philippine HEIs
- Foreign-based microcredentials are offered in the Philippines
- A Program Standards and Guidelines (PSG) is being developed by a CHED Technical Working Group

# Challenges

- Quality Assurance
- Industry and Academe Recognition
- Design and Equivalency



**Thank you very much!**  
**God bless you....**